

## Contents

### 1. Description

- 1.1 Principle of the MACS® Separation
- 1.2 Background information
- 1.3 Applications
- 1.4 Reagent and instrument requirements

### 2. Protocol

- 2.1 Sample preparation
- 2.2 Magnetic labeling
- 2.3 Magnetic separation

### 3. Example of a separation using the CD2 MicroBeads

## 1. Description

<b>Components</b>	2 mL CD2 MicroBeads, human: MicroBeads conjugated to monoclonal anti-human CD2 antibodies (isotype: mouse IgG2b).
<b>Capacity</b>	For 10 <sup>9</sup> total cells, up to 100 separations.
<b>Product format</b>	CD2 MicroBeads are supplied in buffer containing stabilizer and 0.05% sodium azide.
<b>Storage</b>	Store protected from light at 2–8 °C. Do not freeze. The expiration date is indicated on the vial label.

### 1.1 Principle of the MACS® Separation

First, the CD2<sup>+</sup> cells are magnetically labeled with CD2 MicroBeads. Then, the cell suspension is loaded onto a MACS® Column, which is placed in the magnetic field of a MACS Separator. The magnetically labeled CD2<sup>+</sup> cells are retained within the column. The unlabeled cells run through; this cell fraction is thus depleted of CD2<sup>+</sup> cells. After removing the column from the magnetic field, the magnetically retained CD2<sup>+</sup> cells can be eluted as the positively selected cell fraction.

### 1.2 Background information

CD2 MicroBeads have been developed for the separation of human cells based on the expression of the CD2 antigen. The CD2 antibody recognizes the human CD2 antigen, a 50 kDa single-chain transmembrane glycoprotein also known as LFA-2 or receptor for sheep erythrocytes. The antigen belongs to the Ig superfamily and is involved in cell signaling and lymphocyte adhesion. The CD2 antibody reacts with 80–90% of peripheral blood lymphocytes and more than 95% of thymocytes. The antibody recognizes all T cells and a subset of NK cells.

### 1.3 Applications

- Positive selection or depletion of human cells expressing CD2.

- Isolation or depletion of T cells and NK cells from peripheral blood mononuclear cells (PBMCs) or other lymphocyte-containing single-cell suspensions, e.g., from lymphoid tissue.

### 1.4 Reagent and instrument requirements

- Buffer: Prepare a solution containing phosphate-buffered saline (PBS), pH 7.2, 0.5% bovine serum albumin (BSA), and 2 mM EDTA by diluting MACS BSA Stock Solution (# 130-091-376) 1:20 with autoMACS™ Rinsing Solution (# 130-091-222). Keep buffer cold (2–8 °C). Degas buffer before use, as air bubbles could block the column.

▲ **Note:** EDTA can be replaced by other supplements such as anticoagulant citrate dextrose formula-A (ACD-A) or citrate phosphate dextrose (CPD). BSA can be replaced by other proteins such as human serum albumin, human serum, or fetal bovine serum. Buffers or media containing Ca<sup>2+</sup> or Mg<sup>2+</sup> are not recommended for use.

- MACS Columns and MACS Separators: CD2<sup>+</sup> cells can be enriched by using MS, LS, or XS Columns or depleted with the use of LD, CS, or D Columns. Cells which strongly express the CD2 antigen can also be depleted using MS, LS, or XS Columns. Positive selection or depletion can also be performed by using the autoMACS or the autoMACS Pro Separator.

Column	Max. number of labeled cells	Max. number of total cells	Separator
<b>Positive selection</b>			
MS	10 <sup>7</sup>	2×10 <sup>8</sup>	MiniMACS, OctoMACS, VarioMACS, SuperMACS
LS	10 <sup>8</sup>	2×10 <sup>9</sup>	MidiMACS, QuadroMACS, VarioMACS, SuperMACS
XS	10 <sup>9</sup>	2×10 <sup>10</sup>	SuperMACS
<b>Depletion</b>			
LD	10 <sup>8</sup>	5×10 <sup>8</sup>	MidiMACS, QuadroMACS, VarioMACS, SuperMACS
CS	2×10 <sup>8</sup>		VarioMACS, SuperMACS
D	10 <sup>9</sup>		SuperMACS
<b>Positive selection or depletion</b>			
autoMACS	2×10 <sup>8</sup>	4×10 <sup>9</sup>	autoMACS, autoMACS Pro

▲ **Note:** Column adapters are required to insert certain columns into the VarioMACS™ or SuperMACS™ Separators. For details see the respective MACS Separator data sheet.

- (Optional) Fluorochrome-conjugated CD2 antibody for flow cytometric analysis, e.g., CD2-PE (# 130-091-115). For more information about other fluorochrome conjugates see [www.miltenyibiotec.com](http://www.miltenyibiotec.com).
- (Optional) Propidium Iodide Solution (# 130-093-233) or 7-AAD for flow cytometric exclusion of dead cells.
- (Optional) Dead Cell Removal Kit (# 130-090-101) for the depletion of dead cells.

- (Optional) Pre-Separation Filters (# 130-041-407) to remove cell clumps.

## 2. Protocol

### 2.1 Sample preparation

When working with anticoagulated peripheral blood or buffy coat, peripheral blood mononuclear cells (PBMCs) should be isolated by density gradient centrifugation, for example, using Ficoll-Paque™. For details see the General Protocols section of the respective separator user manual. The General Protocols are also available at [www.miltenyibiotec.com/protocols](http://www.miltenyibiotec.com/protocols).

▲ **Note:** To remove platelets after density gradient separation, resuspend cell pellet in buffer and centrifuge at 200×g for 10–15 minutes at 20 °C. Carefully aspirate supernatant. Repeat washing step.

When working with tissues or lysed blood, prepare a single-cell suspension using standard methods. For details see the General Protocols section of the respective separator user manual. The General Protocols are also available at [www.miltenyibiotec.com/protocols](http://www.miltenyibiotec.com/protocols).

▲ Dead cells may bind non-specifically to MACS MicroBeads. To remove dead cells, we recommend using density gradient centrifugation or the Dead Cell Removal Kit (# 130-090-101).



### 2.2 Magnetic labeling

▲ Work fast, keep cells cold, and use pre-cooled solutions. This will prevent capping of antibodies on the cell surface and non-specific cell labeling.

▲ Volumes for magnetic labeling given below are for up to  $10^7$  total cells. When working with fewer than  $10^7$  cells, use the same volumes as indicated. When working with higher cell numbers, scale up all reagent volumes and total volumes accordingly (e.g. for  $2 \times 10^7$  total cells, use twice the volume of all indicated reagent volumes and total volumes).

▲ For optimal performance it is important to obtain a single-cell suspension before magnetic separation. Pass cells through 30  $\mu$ m nylon mesh (Pre-Separation Filters, # 130-041-407) to remove cell clumps which may clog the column. Wet filter with buffer before use.

▲ The recommended incubation temperature is 2–8 °C. Working on ice may require increased incubation times. Higher temperatures and/or longer incubation times may lead to non-specific cell labeling.

1. Determine cell number.
2. Centrifuge cell suspension at 300×g for 10 minutes. Aspirate supernatant completely.
3. Resuspend cell pellet in 80  $\mu$ L of buffer per  $10^7$  total cells.
4. Add 20  $\mu$ L of CD2 MicroBeads per  $10^7$  total cells.
5. Mix well and incubate for 15 minutes in the refrigerator (2–8 °C).
6. (Optional) Add staining antibodies, e.g., 10  $\mu$ L of CD2-PE (# 130-091-115), and incubate for 5 minutes in the dark in the refrigerator (2–8 °C).

7. Wash cells by adding 1–2 mL of buffer per  $10^7$  cells and centrifuge at 300×g for 10 minutes. Aspirate supernatant completely.
8. Resuspend up to  $10^8$  cells in 500  $\mu$ L of buffer.  
▲ **Note:** For higher cell numbers, scale up buffer volume accordingly.  
▲ **Note:** For depletion with LD Columns, resuspend up to  $1.25 \times 10^8$  cells in 500  $\mu$ L of buffer.
9. Proceed to magnetic separation (2.3).



### 2.3 Magnetic separation

▲ Choose an appropriate MACS Column and MACS Separator according to the number of total cells and the number of CD2<sup>+</sup> cells. For details see table in section 1.4.

#### Magnetic separation with MS or LS Columns

1. Place column in the magnetic field of a suitable MACS Separator. For details see the respective MACS Column data sheet.
2. Prepare column by rinsing with the appropriate amount of buffer:  
MS: 500  $\mu$ L      LS: 3 mL
3. Apply cell suspension onto the column.
4. Collect unlabeled cells that pass through and wash column with the appropriate amount of buffer. Collect total effluent; this is the unlabeled cell fraction. Perform washing steps by adding buffer three times. Only add new buffer when the column reservoir is empty.  
MS: 3×500  $\mu$ L      LS: 3×3 mL
5. Remove column from the separator and place it on a suitable collection tube.
6. Pipette the appropriate amount of buffer onto the column. Immediately flush out the magnetically labeled cells by firmly pushing the plunger into the column.  
MS: 1 mL      LS: 5 mL
7. (Optional) To increase the purity of CD2<sup>+</sup> cells, the eluted fraction can be enriched over a second MS or LS Column. Repeat the magnetic separation procedure as described in steps 1 to 6 by using a new column.

#### Magnetic separation with XS Columns

For instructions on the column assembly and the separation refer to the XS Column data sheet.

#### Depletion with LD Columns

1. Place LD Column in the magnetic field of a suitable MACS Separator. For details see LD Column data sheet.
2. Prepare column by rinsing with 2 mL of buffer.
3. Apply cell suspension onto the column.
4. Collect unlabeled cells that pass through and wash column with 2×1 mL of buffer. Collect total effluent; this is the unlabeled cell fraction. Perform washing steps by adding buffer two times. Only add new buffer when the column reservoir is empty.

### Depletion with CS Columns

1. Assemble CS Column and place it in the magnetic field of a suitable MACS Separator. For details see CS Column data sheet.
2. Prepare column by filling and rinsing with 60 mL of buffer. Attach a 22G flow resistor to the 3-way stopcock of the assembled column. For details see CS Column data sheet.
3. Apply cell suspension onto the column.
4. Collect unlabeled cells that pass through and wash column with 30 mL buffer from the top. Collect total effluent; this is the unlabeled cell fraction.

### Depletion with D Columns

For instructions on column assembly and separation refer to the D Column data sheet.

### Magnetic separation with the autoMACS™ Separator or the autoMACS™ Pro Separator

- ▲ Refer to the respective user manual for instructions on how to use the autoMACS™ Separator or the autoMACS Pro Separator.
- ▲ Buffers used for operating the autoMACS Separator or the autoMACS Pro Separator should have a temperature of  $\geq 10$  °C.
- ▲ Program choice depends on the isolation strategy, the strength of magnetic labeling, and the frequency of magnetically labeled cells. For details refer to the section describing the cell separation programs in the respective user manual.

#### Magnetic separation with the autoMACS™ Separator

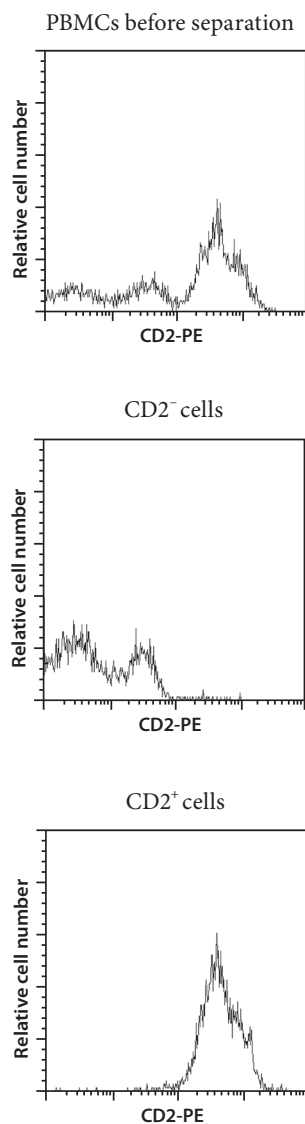
1. Prepare and prime the instrument.
2. Apply tube containing the sample and provide tubes for collecting the labeled and unlabeled cell fractions. Place sample tube at the uptake port and the fraction collection tubes at port neg1 and port pos1.
3. For a standard separation choose one of the following programs:  
Positive selection: "Possel"  
Collect positive fraction from outlet port pos1.  
  
Depletion: "Depletes"  
Collect negative fraction from outlet port neg1.

#### Magnetic separation with the autoMACS™ Pro Separator

1. Prepare and prime the instrument.
2. Apply tube containing the sample and provide tubes for collecting the labeled and unlabeled cell fractions. Place sample tube in row A of the tube rack and the fraction collection tubes in rows B and C.
3. For a standard separation choose one of the following programs:  
Positive selection: "Possel"  
Collect positive fraction in row C of the tube rack.  
  
Depletion: "Depletes"  
Collect negative fraction in row B of the tube rack.

### 3. Example of a separation using the CD2 MicroBeads

CD2<sup>+</sup> cells were separated from human PBMCs using the CD2 MicroBeads. For positive selection CD2<sup>+</sup> cells were isolated using an MS Column and a MiniMACS™ Separator. For depletion of CD2<sup>+</sup> cells, the sample was separated over an LD Column in a MidiMACS™ Separator. Cells are fluorescently stained with CD2-PE (# 130-091-115). Cell debris and dead cells are excluded from the analysis based on scatter signals and PI fluorescence.



Refer to [www.miltenyibiotec.com](http://www.miltenyibiotec.com) for all data sheets and protocols. Miltenyi Biotec provides technical support worldwide. Visit [www.miltenyibiotec.com/local](http://www.miltenyibiotec.com/local) to find your nearest Miltenyi Biotec contact.

## Warnings

Reagents contain sodium azide. Under acidic conditions sodium azide yields hydrazoic acid, which is extremely toxic. Azide compounds should be diluted with running water before discarding. These precautions are recommended to avoid deposits in plumbing where explosive conditions may develop.

## Legal notices

### Limited product warranty

Miltenyi Biotec B.V. & Co. KG and/or its affiliate(s) warrant this product to be free from material defects in workmanship and materials and to conform substantially with Miltenyi Biotec's published specifications for the product at the time of order, under normal use and conditions in accordance with its applicable documentation, for a period beginning on the date of delivery of the product by Miltenyi Biotec or its authorized distributor and ending on the expiration date of the product's applicable shelf life stated on the product label, packaging or documentation (as applicable) or, in the absence thereof, ONE (1) YEAR from date of delivery ("Product Warranty"). Miltenyi Biotec's Product Warranty is provided subject to the warranty terms as set forth in Miltenyi Biotec's General Terms and Conditions for the Sale of Products and Services available on Miltenyi Biotec's website at [www.miltenyibiotec.com](http://www.miltenyibiotec.com), as in effect at the time of order ("Product Warranty"). Additional terms may apply. BY USE OF THIS PRODUCT, THE CUSTOMER AGREES TO BE BOUND BY THESE TERMS. THE CUSTOMER IS SOLELY RESPONSIBLE FOR DETERMINING IF A PRODUCT IS SUITABLE FOR CUSTOMER'S PARTICULAR PURPOSE AND APPLICATION METHODS.

### Technical information

The technical information, data, protocols, and other statements provided by Miltenyi Biotec in this document are based on information, tests, or experience which Miltenyi Biotec believes to be reliable, but the accuracy or completeness of such information is not guaranteed. Such technical information and data are intended for persons with knowledge and technical skills sufficient to assess and apply their own informed judgment to the information. Miltenyi Biotec shall not be liable for any technical or editorial errors or omissions contained herein.

All information and specifications are subject to change without prior notice. Please contact Miltenyi Biotec Technical Support or visit [www.miltenyibiotec.com](http://www.miltenyibiotec.com) for the most up-to-date information on Miltenyi Biotec products.

### Licenses

This product and/or its use may be covered by one or more pending or issued patents and/or may have certain limitations. Certain uses may be excluded by separate terms and conditions. Please contact your local Miltenyi Biotec representative or visit Miltenyi Biotec's website at [www.miltenyibiotec.com](http://www.miltenyibiotec.com) for more information.

The purchase of this product conveys to the customer the non-transferable right to use the purchased amount of the product in research conducted by the customer (whether the customer is an academic or for-profit entity). This product may not be further sold. Additional terms and conditions (including the terms of a Limited Use Label License) may apply.

CUSTOMER'S USE OF THIS PRODUCT MAY REQUIRE ADDITIONAL LICENSES DEPENDING ON THE SPECIFIC APPLICATION. THE CUSTOMER IS SOLELY RESPONSIBLE FOR DETERMINING FOR ITSELF WHETHER IT HAS ALL APPROPRIATE LICENSES IN PLACE. Miltenyi Biotec provides no warranty that customer's use of this product does not and will not infringe intellectual property rights owned by a third party. BY USE OF THIS PRODUCT, THE CUSTOMER AGREES TO BE BOUND BY THESE TERMS.

### Trademarks

autoMACS, MACS, MidiMACS, the Miltenyi Biotec logo, MiniMACS, OctoMACS, QuadroMACS, SuperMACS, and VarioMACS are registered trademarks or trademarks of Miltenyi Biotec and/or its affiliates in various countries worldwide. All other trademarks mentioned in this publication are the property of their respective owners and are used for identification purposes only.

Ficoll-Paque is a trademark of GE Healthcare companies.

Copyright © 2020 Miltenyi Biotec and/or its affiliates. All rights reserved.